



Jalice
OFFICE FURNITURE

Product
Collection

2023



Product Collection 2023



CONTENTS



LAVAN	6
ZAGROS	10
ALVAND	12
ALBORZ	14
CAPRI	16
SAHAND	18
SADAF	20
. TYPE 1	22
. TYPE 2	
SENATOR	24
KISH	26
BANAFSHE	28
NEKA	34
LARAK	40
KIAN	46
BARAN	50
DARYA	51
MOJ	52
NASTARAN	53
SHABNAM	54
ROSE	55
SAHEL	56
SHAHIN	57
KHORSHID	58
YASMIN	59
MODULAR	69
MORVARID	61
COUNTERS	62

JALICE is an office furniture brand that was launched to meet the daily needs of offices, especially in the post-digital revolution era. In the second approach, it pays attention to home businesses and startups.

JALICE has a design approach in his productions. Pays attention to customer needs and is committed to quality in production and scheduling.

Harmony - which means the coordination of all components, from design to support and matching of products with the soul and atmosphere of the consumer's organization - is the fundamental approach of JALICE.

The audience knows JALICE as an expensive brand. JALICE is a leader, innovator and supporter.

The name Jalice is a reminder of companionship and sitting.



LAVAN OFFICE FURNITURE FAMILY



LAVAN Alpha Managment Desk, Legs, with robust structure and sturdy connectors, are made of extruded aluminum profiles with special die-casting; anodized in two colors: silver and champagne.

Size: **(200, 220, 240) × 200 × 74** cm



LAVAN Filing Cabinet, a supplement to Lavan Alpha desk, offers compartment for CPU or bag and three soft closing drawers. In addition, it offers the option of converting one of the drawer into a safety box and adding also a sliding trash bin in the product.

Size: **120 × 60 × 65** cm



LAVAN Beta Management Desk, offers three soft-closing drawers and the option of converting one of them into a safety box. and also offers properties such as a cable passage duct and optional electric hub including power outlet, network, microphone, USB and VGA socket. It also offers sample storage space in the "L" section to store items such as bags and an option of adding a trash can.

Size: **(200, 220, 240) × 208 × 74** cm



LAVAN Console Cabinet, benefits from sliding door with soft close mechanism and storage to place binder. This product can be offered separately or along with Lavan console.

Cabinet Size: **150 × 50 × 66** cm
Desk Size: **200 × 60 × 74** cm



to see more

LAVAN OFFICE FURNITURE FAMILY



LAVAN Conference Desk, offers properties such as a cable passage duct and optional electric hub including power outlet, network, microphone, USB and VGA socket.

Available in 4 | 6 | 8 | 10

Size: (110, 170, 240) × 110 × 74 cm
320 × 157 × 74 cm



LAVAN Landa Management Desk, benefits from a simple and minimal design with special features and a cable passage duct.

Size: (200, 220, 240) × 90 × 74 cm

LAVAN Coffee Table, part of Lavan executive family, is made of soft touch MDF panel with 16 mm thickness.

Available in 60 | 120 cm

size: (120,60) × 60 × 40 cm

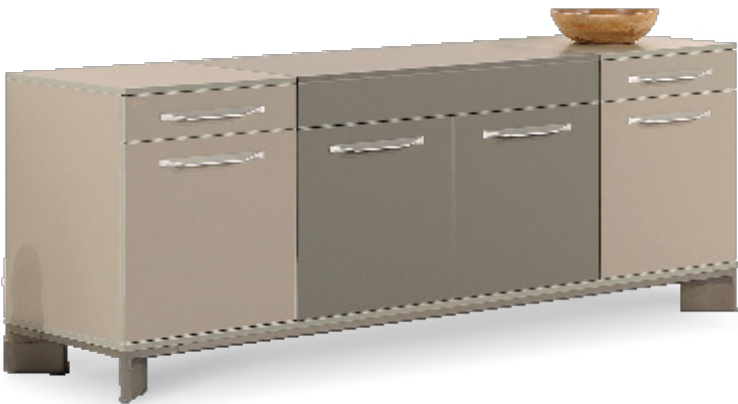


LAVAN Oval Conference Table, is a 4-piece MDF panel with different color combination adds a unique aesthetic charm to the product. and also equipped with an optional electric hub including power outlet, network, microphone, USB and VGA socket.

Size: 350 × 150 × 74 cm
570 × 200 × 74 cm

LAVAN Bookcase Cabinet, with combination of glass doors and soft touch melamine-faced MDF panels, offers small drawers and a storage to place binder. In addition, it is equipped with a soft touch clothes hanger.

Size: 190 × 45 × 164 cm



LAVAN Credenza, is equipped with an optional electric hub including power outlet, network, microphone, USB and VGA socket.

Size: 200 × 50 × 74 cm



ZAGROS Management Desk offers a drawer and a cupboard with soft-closing rails for storing personal items. The option of adding a safety box in one of the drawers is available.

Size: **220 × 90 × 74 cm**

ZAGROS L-Credenza, as a supplement to Zagros collection, is placed next to executive desk and turns it into an L-shaped executive desk. It offers a drawer as well as a cupboard with soft-closing rails to store the personal items. This product is equipped with an electric hub with features including power outlet, network, microphone, USB and VGA socket.

Size: **120 × 50 × 74 cm**



ZAGROS

ZAGROS Conference Table is equipped with an optional electric hub with features including power outlet, network, microphone, USB and VGA socket.

Size: **189 × 105 × 74 cm**
250 × 105 × 74 cm



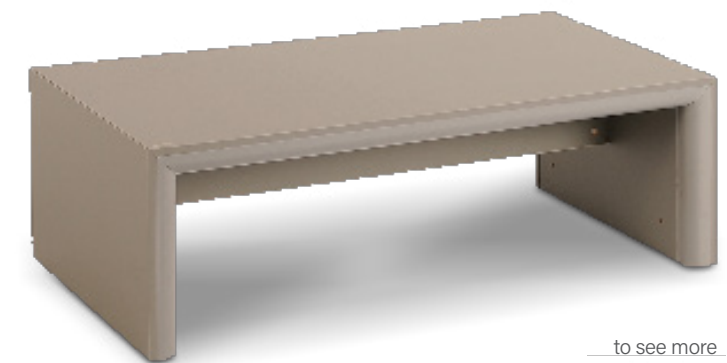
ZAGROS Credenza pull handles are supplied by Citterio, Italy. A unique feature of this product is the electrostatically painted aluminum profiles that are meticulously implemented at a 45-degree angles.

Size: **220 × 50 × 74 cm**

ZAGROS Coffee Table is made of soft touch MDF panels with special aluminum profiles of Jalice.

Available in **60 | 120 cm**

Size: **(60, 120) × 60 × 40 cm**



to see more





ALVAND Management Desk, provides a cupboard with the ability to place binder. It is equipped with an optional electric hub with features including power outlet, network, microphone, USB and VGA socket.

Size: **220 × 180 × 74** cm

ALVAND Credenza, part of Alvand executive family, offers a soft-closing drawer and a cupboard to place personal items, plus an ability to place binder in the cupboard.

Size: **200 × 45 × 74** cm



■ ■ ■ **Conference Table is Same in Both Family Alvand and Alborz**



ALVAND Conference Table, part of Alborz and Alvand executive family, offers a seal strip right in the middle of desk top for passing cable.

Size: **(250, 320) × 126 × 74** cm

to see more



MANAGEMENT DESK

ALBORZ



ALBORZ Management Desk, offers the option of an integrated safe box and an exclusive sliding-out trash can. It also includes CPU compartment with proper ventilation to prevent heating up and the optional electric hub.

Size: 250 × 203 × 74 cm

ALBORZ Sliding Door Bookcase, part of Alborz executive collection, offers a suitable and sufficient space for books, binders and decorative items.

Size: 170 × 40 × 172 cm



ALBORZ Conference Table, part of Alborz and Alvand executive family, offers a seal strip right in the middle of desk top for passing cable.

Size: (250, 320) × 126 × 74 cm



ALBORZ Credenza, part of Alborz executive family, offers drawers to store personal and office supplies and two storage with sliding door mechanism to place binder.

Size: 200 × 50 × 74 cm

to see more



CAPRI OFFICE FURNITURE FAMILY



CAPRI Management Desk, offers two leather-covered drawers, and a sliding door with soft-closing mechanism. It is equipped with cable entry cap and an optional electric hub with power outlet, network, microphone, USB and VGA socket. The front decorative box is lined with high quality leather.

Size: 220 × 165 × 74 cm



Capri Executive Desk offers a sliding door cupboard for archiving binders as well as drawers for storing personal items. It is also equipped with a special cable entry cap.

Size: 170 × 145 × 74 cm

CAPRI Credenza, part of Capri executive and managerial collection, offers two leather covered drawers and two sliding doors with soft- close mechanism. As well as a leather-lined display compartment.

Size: 200 × 50 × 75.5 cm



CAPRI Oval Conference Table, offers an optional electric hub with features including power outlet, network, microphone, USB and VGA socket. A negative slope at the edge of the table, with polyurethane coating, is the special feature of the product.

Available in Oval | Circle

Size: 240 × 130 × 74 cm
** Size Circle: Ø 130 × 74 cm

CAPRI Oval Coffee Table, is an integral part of Capri family. A negative slope at the edge of the table, with polyurethane coating, is the special feature of this product.

Available in Oval | Circle

Size: (65, 80, 120) × (65, 80, 60) × 40 cm



to see more



SAHAND OFFICE FURNITURE FAMILY



SAHAND Management Desk, offers features such as drawers with soft-close mechanism, a file archiving drawer as well as a special compartment to store bags and personal items.

Size: **220 × 180 × 74** cm

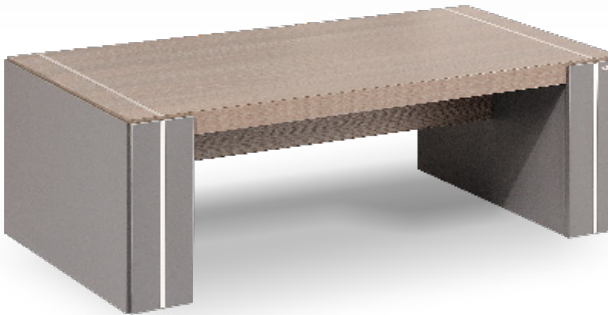


SAHAND Conference Table, benefits from a top made with light panel MDF (50 mm thickness) as well as durable connectors and inner frame construction. The use of aluminum flat bars (10 x 5 cm) adds a unique aesthetic to the product.

Size: **240 × 105 × 74** cm

SAHAND Coffee Table, benefits from special features and is in harmony with Sahand executive collection. The use of aluminum flat bars (10 x 5 cm) adds a unique aesthetic charm to the product.

Size: **120 × 61 × 40** cm



SAHAND Credenza, offers a drawer with soft-close mechanism. The option of placing binder in the product is available. The special design and the suspension of the main part make it a distinctive option compared to similar products.

Size: **199 × 56 × 74** cm



to see more

SADAF OFFICE FURNITURE FAMILY



MANAGEMENT
DESK TYPE 1



SADAF Management Desk, offers a drawer to place personal and office supplies as well as a file archiving drawer. The option of adding a file cabinet under the L-shaped desk is available.

Size: 220 × 186 × 74 cm



SADAF 1

SADAF Filing Cabinet, offers a drawer to place personal and office items as well as a file storing drawer. The option of adding it under the L-shaped desk is available.

Size: 80 × 47 × 64.5 cm



to see more

SADAF 2 OFFICE FURNITURE FAMILY



SADAF Type 2 Management Desk, offers a lockable cabinet in addition to a CPU compartment, a sliding door cabinet, a file archiving drawer and ample storage space in its "L" section.

Size : 220 × 186 × 74 cm

MANAGEMENT
DESK TYPE 2



■ ■ ■ SADAF 2



SADAF Credenza, benefits from durable connectors and inner-frame construction which can stand up to the stress of frequent moving, installation and relocation; It is also equipped with a discreet leveling mechanism to compensate for uneven floors.

Size: 200 × 56 × 83 cm

to see more



Management Desk SENATOR



SENATOR Management Desk, offers a filing cabinet with two lockable drawers including a stationery drawer plus a binder archiving drawer.

Size: **200 × 90 × 74** cm

SENATOR Side L

Size: **110 × 49.8 × 74** cm



SENATOR Credenza offers features such as file storing drawers, a file hanging cupboard and proper lighting. The product can also be ordered as separate components if desired.

Size: **250 × 60 × 183.5** cm

SENATOR Conference Table is equipped with an optional electric hub with features including optional electrical outlet, network, charging, microphone and VGA socket.

Size: **274 × 140 × 74** cm



SENATOR Coffee Table, with simple and remarkable design, is produced in two sizes.

Size: **(120, 60) × 60 × 38** cm

to see more



KISH OFFICE FURNITURE FAMILY

Executive Desk
KISH



KISH Office Desk benefits from features such as a two-drawer filing cabinet and a space suitable for office and personal items. The option of adding a portable L-part with a suitable storage to place binder is available.

Size: (140, 160, 180) × 74 × 70 cm



KISH 1 Wooden Door Binder Storage
Size: 75 × 37 × 113 cm



KISH 3 Open Shelf Binder Storage
Size: 75 × 37 × 113 cm



KISH Movable Cabinet is a portable binder storage.

Size: 220 × 180 × 74 cm

KISH Coffee Table, part of Javaneh group, with various dimensions and color combination, is suitable for any space.

Size: 55 × 55 × 35.5 cm | 110 × 55 × 35.5 cm
110 × 110 × 35.5 cm | 70 × 70 × 35.5 cm



to see more

BANAFSHE



ADMINISTRATIVE
DESK

to see more



BANAFSHE Administrative desk, is equipped with a cable entry cap. This product can be also produced with L-shaped form.

Size "administrative": **138 × 75 × 74 cm**
Size "L": **80 × 50 × 74 cm**



BANAFSHEH 7 Binder Storage, offers a suitable storage to place binder. Having an all-wooden door, makes it appropriate for using in offices to keep the binders out of sight.

Size: **90 × 40 × 180 cm**

BANAFSHEH 7 Binder Storage, with top glass and bottom wooden door offers a storage suitable to place binder.

Size: **90 × 40 × 180 cm**



BANAFSHEH 7 Binder Storage, offers a suitable storage to place binder. It is produced in three types: glass door, wooden door and top glass door with bottom wooden door.

Size: **90 × 40 × 180 cm**

BANAFSHE FAMILY

BANAFSHEH 217 Full Wooden Door Bookcase, offers a suitable storage to place binders.

Size: **90 × 40 × 217** cm



BANAFSHEH 217 Bookcase Cabinet, offers a storage to place binder.

Size: **90 × 40 × 217** cm

BANAFSHEH 217 Open Shelf Bookcase, offers a storage to place binder.

Size: **90 × 40 × 217** cm



BANAFSHEH 6 Filing Cabinet, offers four drawers, with a central lock, to place files and office documents.

Size: **49 × 40 × 162** cm

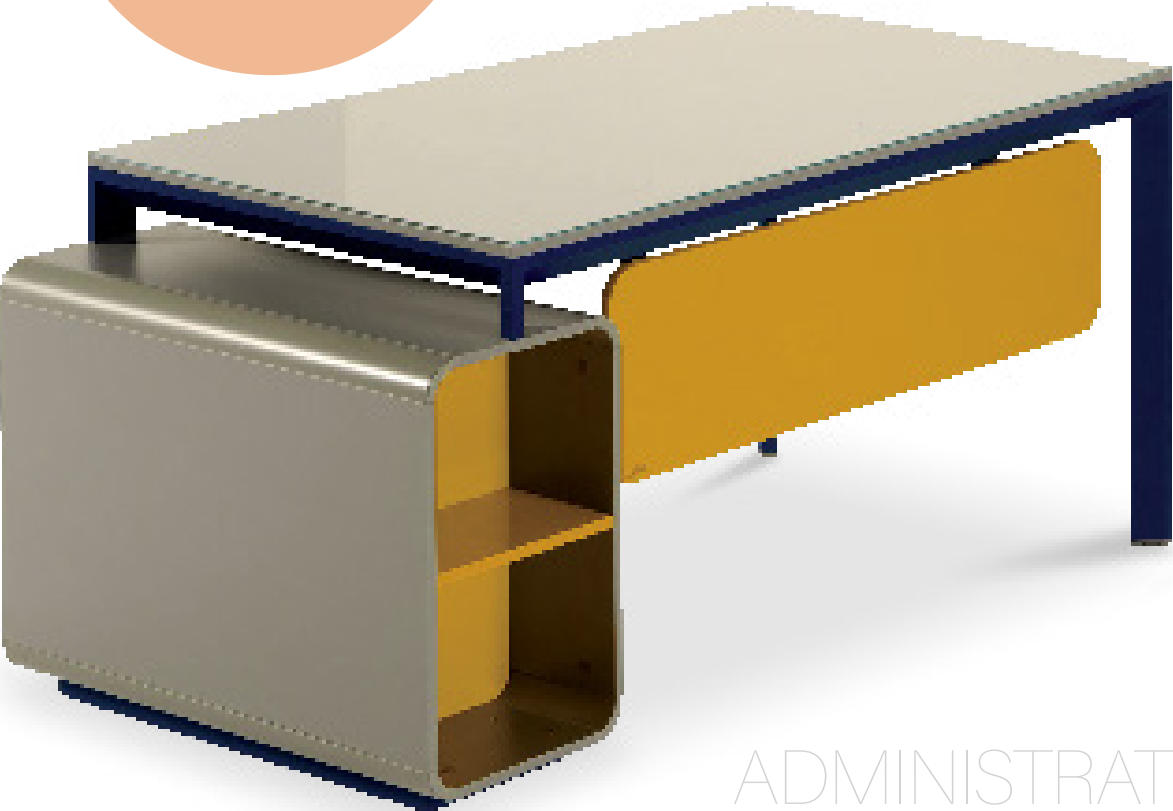
BANAFSHEH 1 Movable Filing Cabinet, offers three drawers, with a central lock, to place personal and office items. It is a good option to use beside the office desks.

Size: **40 × 47 × 56** cm





NEKA OFFICE FURNITURE FAMILY



ADMINISTRATIVE
DESK



NEKA G Administrative Desk, part of Neka family, offers two drawers with the file archiving ability and curved corners. The decorative compartment, at the exterior view, adds an aesthetic charm to the product.

Size: 154 × 75 × 74 cm



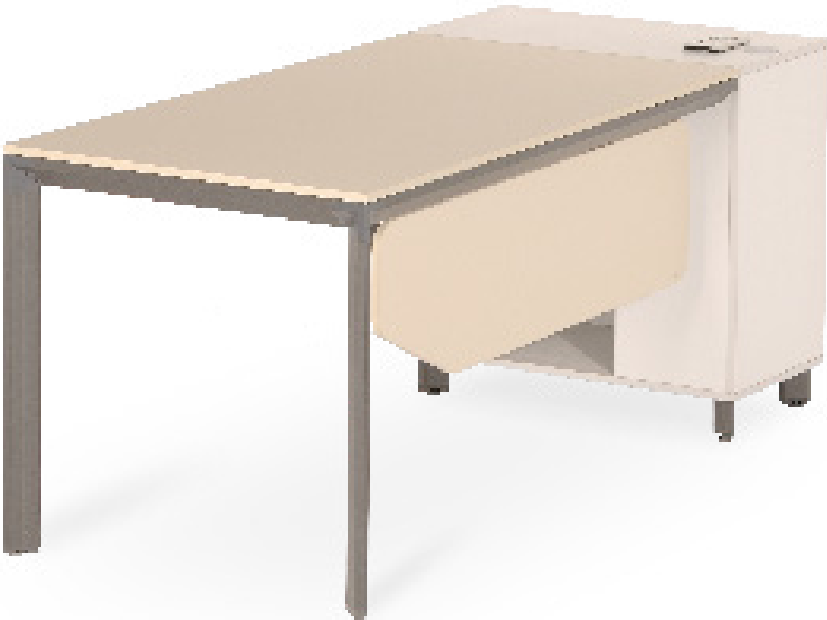
NEKA B, part of Neka family, is equipped with a special cable entry cap and under-desk CPU holder. Plus, it offers a two-drawer file cabinet with proper space for storing supplies.

Size: (320, 280) × 150 × 74 cm
Size: (160, 180, 200) × 830 × 150 cm



NEKA B Administrative Desk, part of Neka modular administrative collection, offers a compartment for placing CPU with proper ventilation. The product is equipped with an optional electric hub for electricity, telephone and network.

Size: (160, 180, 200) × 75 × 74 cm



to see more



NEKA FURNITURE FAMILY



NEKA A Administrative Desk, is made of melamine-faced MDF panel with the legs of anodized extruded aluminum. The profile and legs frame components are joined via die-cast connectors; made of Zamak.

Size: **(100, 120, 140, 160) × 75 × 74** cm



NEKA C Conference Table, part of Neka managerial collection, offers a MDF panel with 16 mm thickness. The option of turning it to a conference table with unlimited length by utilizing the middle die-casting leg system is available.

Size: **(110, 150) × 110 × 74** cm



NEKA E Administrative Desk, offers two soft-closing drawers with file archiving ability and aluminum handles with a central lock. In addition, it is equipped with CPU compartment and an air ventilation cover.

Size: **(153, 173, 193) × 75 × 74** cm



NEKA D Administrative Desk, part of Neka managerial collection, offers two drawers with the file archiving ability. The decorative compartment, at the exterior view, adds an aesthetic charm to the product.

Size: **(134, 154, 174) × 75 × 74** cm



NEKA DESK FAMILY



NEKA F Executive Desk, collection offers an L-desk with the option of adding a portable cabinet with a CPU holder as well as file archiving drawers. It is also equipped with a special cable entry cap.

Size: **(160, 180, 200) × 165 × 74** cm



NEKA Credenza, part of Neka managerial collection, offers features such as special filing drawer, sliding door and a storage for placing binder in different dimensions.

Size: **180 × 45 × 83** cm

NEKA 4 Movable Filing Cabinet, offers two file archiving drawers with a central lock. The CPU compartment is equipped with an air ventilation cover in order to adjust the compartment temperature.

Size: **80 × 55 × 63** cm



Neka 5 Two-Drawer Cabinet

Size: **90 × 40 × 119** cm

NEKA 2 Glass Door Binder Storage

Size: **90 × 40 × 119** cm



NEKA 1 Wooden Door Binder Storage

Size: **90 × 40 × 119** cm

NEKA 3 Open Shelf Binder Storage

Size: **90 × 40 × 119** cm



LARAK WORKSTATION FAMILY



LARAK Workstation, part of Larak administrative and managerial collection, offers a special cable entry cap and a CPU compartment as well as a side cabinet with a suitable space to store office items.

Size: **293 × (150, 170) × 74** cm



LARAK E Managerial Desk, parts are made of melamine-faced MDF panels with 16 mm thickness. The facing parts and front panel are made of gloss MDF. The legs of the product, electrostatically painted, are exclusive design of Jalice.

Size: **(150, 170) × 149.5 × 74** cm

LARAK F Managerial Desk, is also equipped with a .particular cable entry cap

Size: **170 × 160 × 74** cm



LARAK Credenza, part of Larak F managerial collection, offers drawers for different purposes and a storage to place binder. In addition, it benefits from a space for decorative items which adds a unique aesthetic to the product.

Size: **184 × 47.5 × 79** cm

to see more



LARAK WORKSTATION FAMILY



LARAK B Administrative, offers a space for placing CPU with proper ventilation as well as a portable side cabinet with a file archiving drawer. This desk is available, in double and quadruple layouts, as a workstation.

Size: **(157, 177, 197) × 84 × 74** cm



LARAK Upper Binder Storage

Size: **83.5 × 40 × 67** cm



LARAK Whiteboard Wardrobe

Size: **75 × 40 × 89** cm



LARAK A Administrative Desk, is designed in such a way that can be produced in any different length.

Size: **(90, 110, 130, 150, 170) × 70 × 74** cm



LARAK C Conference Table, benefits from a top that is made of MDF panels with 16 mm thickness and leg frames that are connected via die-cast components.

Size: **(150, 90) × 90 × 74** cm

LARAK WORKSTATION FAMILY



Larak 1 Filing Cabinet, part of Larak F managerial family, offers a drawer with file archiving ability and a binder storage.

Size: 40 × 48.6 × 135 cm



LARAK 4 Movable Filing Cabinet, part of Larak family, offers features such as CPU compartment, two drawers and suitable space to store office supplies.

Size: 75 × 54 × 67 cm



LARAK 5 Two-Drawer Filing Cabinet, part of Larak family, is equipped with a central lock. It also offers a binder storage and two drawers with file archiving ability.

Size: 40 × 48.5 × 135 cm



LARAK Two-Drawer Under-Desk Filing Cabinet, offers two drawers with the file hanging ability and a central lock.

Size: 40 × 54 × 67 cm

LARAK Workstation, This product is capable of installing electric box with required sockets and mobile phone chargers. It has modular metal bases with the ability to arrange various workstations, conferences and meetings. In this products it is possible to choose different colors for different parts of the base; also it provides the possibility to display magazines and brochures on inclined surfaces. It has proper shelves and convenient and practical drawers for the facility of the users too.

Using the combination of Satina glass dividers and sound insulation panels (Wool Panel) as dividers to reduce sound exchange is another notable feature.

To add more, it has the ability to choose between moving file wheeled or fixed files and it improvised a space for coat hanger in one the models too.



LARAK Workstation Specifications, Simultaneous access to all above mentioned facilities (Product features) without leaving your desk.

LARAK Technical Information,

All table parts are made of 16mm melamine MDF. For this collection, it is possible to use a combination of matte MDF with anti-finger coating and polyurethane coating colors. The bases used in the product have a special and exclusive design of Jalice Company, and its different parts are covered with electrostatic colors. The bases of the product are made of extruded aluminum parts, which are connected to each other by Die-cast parts made of Zamak or aluminum. It has also fittings and connections with the ability to open and close again from Blum and Hafele Company. Using rails and hinges with a locking mechanism are an advantage.

KIAN WORKSTATION FAMILY



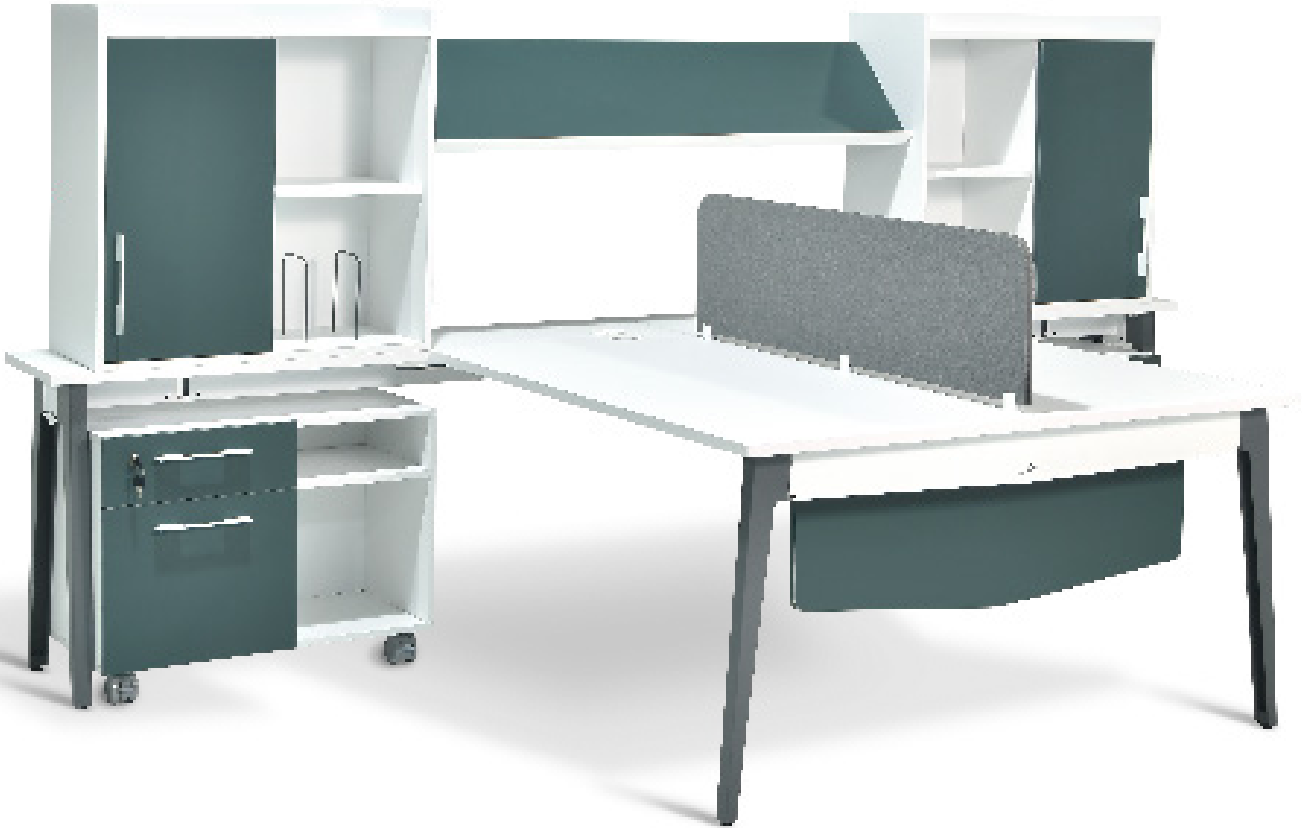
KIAN Workstation Features,

This product is capable of installing electric box with required sockets and mobile phone chargers. It has modular metal bases with the ability to arrange various workstations, conferences and meetings. In this products it is possibility to choose different colors for different parts of the base; also it provides the possibility to display magazines and brochures on inclined surfaces. It has proper shelves and convenient and practical drawers for the facility of the users too. Using the Wool Panel as dividers to reduce sound exchange is another notable feature.



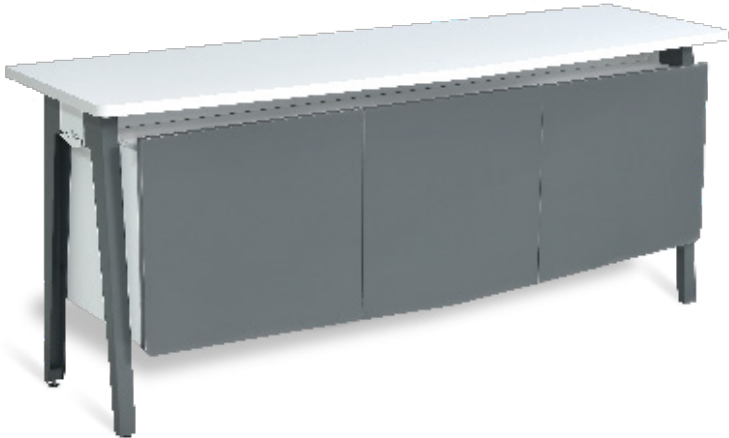
KIAN Workstation Specifications,

Simultaneous access to all above mentioned facilities (Product features) without leaving your desk. The other distinguishing feature of the Kian family is the choice of appropriate and affordable materials in the design and construction of this collection, which, in addition to the complete facilities required by the user, is economical. In other words, it imposes lower costs to the customer.



KIAN Workstation Technical Information,

All table tops are made of 25mm melamine MDF. The parts of the body, facade and front panel of the table are all made of MDF16 melamine. For this collection, it is possible to use a combination of matte MDF with anti-finger coating and polyurethane coating colors. The bases used in the product have a special and exclusive design of Jalice Company, and its different parts are covered with electrostatic colors.



The assembly of the main structure of the table is done in the shortest possible time due to the presence of Click connections. It has also fittings and connections with the ability to open and close again from Blum and Hafele Company. Using rails and hinges with a locking mechanism is another advantage.



Jalice
OFFICE FURNITURE

Single Product | 2023

BARAN

EXECUTIVE DESK



BARAN Executive Desk, offers features such as a lockable drawer for storing personal items, a file archiving drawer, plus a discreet front storage cabinet with adjustable shelves, and a cable entry cap.

Size: **180 × 160 × 74 cm**

to see more



DARYA

EXECUTIVE DESK



DARYA Executive Desk, offers a three-drawer filing cabinet with file hanging ability and a sliding door cupboard to place binders. A discreet storage cabinet with adjustable shelves is embedded at the front side of the desk.

Size: **180 × 158 × 74 cm**

to see more



MOJ



EXECUTIVE
DESK



to see more



MOJ Executive Desk, offers a drawer to place personal items as well as a cable entry cap.

Size: 200 × 158 × 74 cm

NASTARAN



EXECUTIVE DESK



NASTARAN Executive Desk, offers three drawers with file hanging and binder placing ability.

Size: 160 × 158 × 74 cm

to see more



ADMINISTRATIVE DESK

SHABNAM



SHABNAM Administrative Desk, offers features including a drawer to store stationery items as well as a CPU compartment and a cable entry cap. The option of placing binder is also available.

Size: **139 × 73.2 × 74 cm**



to see more



ROSE



ROSE Administrative Desk, offers a small drawer for personal items and the available option of placing binder.

Size: **145 × 75 × 74 cm**



to see more



FILLING CABINET

SAHEL

SAHEL 5 Filing Cabinet,
Size: 40 × 128.2 × 90 cm



SAHEL 1 Wooden Door Binder Storage,
Size: 40 × 128.2 × 90 cm

SAHEL 3 Open Shelf Binder Storage,
Size: 40 × 128.2 × 90 cm

SAHEL 2 Glass Door Binder Storage Cabinet,
Size: 40 × 128.2 × 90 cm

to see more



CONFERENCE TABLE



SHAHIN

SHAHIN 18-person Conference Table, is part of classic products. It benefits from a special design and facilities such as a reception counter and a cable entry cap. In addition, the option of installing an optional electric hub on the table is available.

Size: 600 × 188 × 83.5 cm

to see more



CONFERENCE TABLE

KHORSHID



KHORSHID Conference Table is suitable for 4 to 6 persons due to its circular shape.

Size: Ø 139 × 71 cm



FILLING CABINET



YASMIN



YASMIN 3 Filing Cabinet, offers three drawers with central lock suitable to store files and personal items.

Size: 49 × 47 × 66.8 cm



GENERAL DESK

MODULAR



MODULAR Desk, comes in two families of Mehr and Aban, respectively with 65 and 75 cm width and different lengths. The top is made of MDF panel with 25 mm thickness.

Size: (75, 100, 120, 140, 160, 180) × 75 × 74 cm
(65, 90, 110, 130, 150) × 65 × 74 cm

Conference Desk,
Size: (105, 150, 210) × 105 × 74 cm



CONFERENCE TABLE

MORVARID

MORVARID Conference Table, is part of Sadaf executive family.
Size: 200 × 110 × 71 cm



COUNTERS



JALICE Counters, are available in flat and Curved.

The top and body are made of MDF panels with 16 and 25mm thickness.

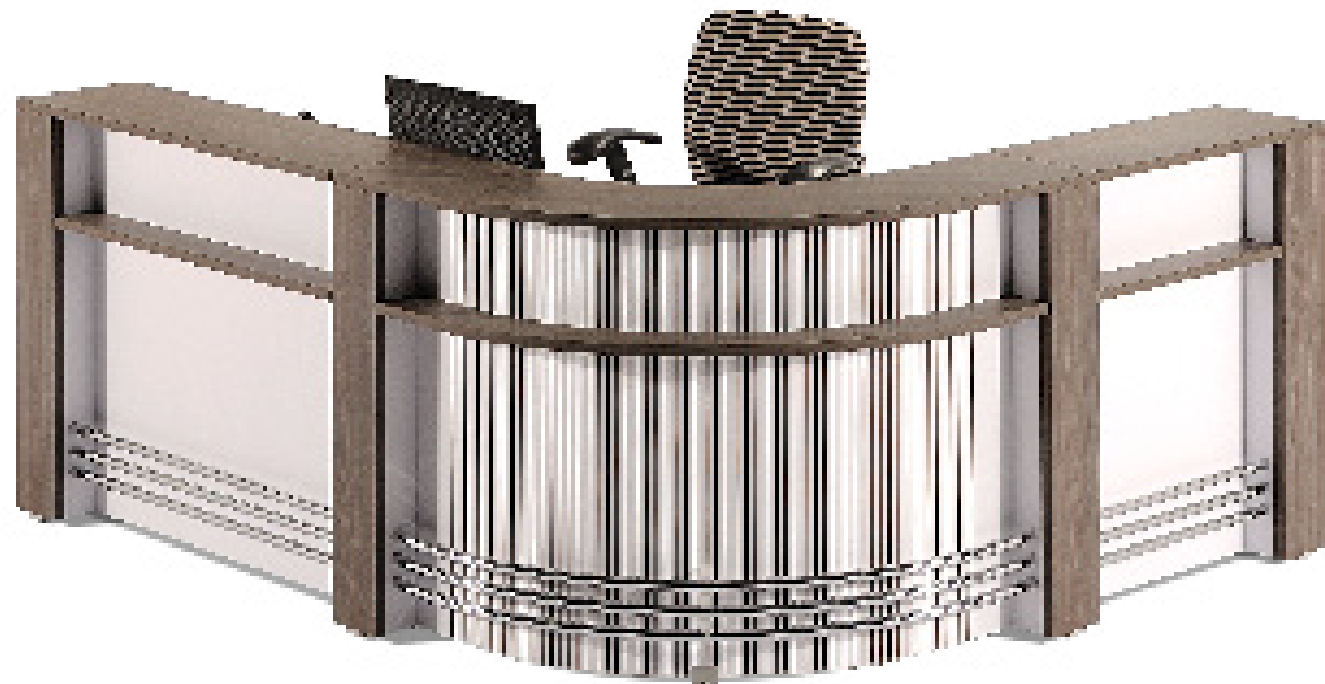
Durable connectors and inner-frame construction stand up to the stress of frequent moving, installation and relocation; provided by Hafele, Germany and Blum, Austria.

The legs with robust structure and sturdy connectors are made of extruded aluminum profiles with special die-casting; anodized in two colors: silver and champagne.

The pull handles are supplied by Bianca, Italy.

The central lock is supplied by Hafele, Germany





SARV2 RECEPTION DESK



SARV 2 Counter is produced in different lengths. It offers a customer reception desk with a cable entry cap and the option of adding a portable under desk cabinet.

Size: **Variable** × 95 × 100 cm



DORSA COUNTER

DORSA Counter offers a CPU compartment, a customer reception desk and a cable entry cap. The option of adding a portable under-desk cabinet to the counter is also available.

Size: **(200, 220, 240)** × 140 × 112 cm



LAVAN
COUNTER



LAVAN Counter, part of curved counters collection, offers a three-drawer filing cabinet, a central lock for placing personal items and the customer reception counter. The aluminum parallel columns on the exterior part of the counter.

Size: **(260, 280, 300) × 193 × 110** cm

to see more





More than three decades of delivering the highest quality of products to customers have led Jalice to be one of the most trusted brands in the office furniture industry in the Middle-East. Currently operating at a 15,000 square meter state of the art manufacturing facility, Jalice offers a range of office furnishing solutions, from the modest administrative desks to sophisticated modern partition wall systems.

Starting from its very first product in 1974, a simple computer desk, customer needs and satisfaction have always been the main focus and drive behind every decision.

Jalice will continue to hold itself to the highest standards and will ensure to leverage the latest innovations to maintain leadership in quality and trust.

ADDRESS: No.1, Amaj Alley, 23rd St., Seyed Jamaluddin Asadabadi Ave.,
Tehran - Iran | www.jalice.ir | **TEL:** 021-89354 | **EMAIL:** info@jalice.ir